



CPVC STAND OFF STRAP

Two Hole Model 1050

SIZE:

3/4" thru 2" CPVC pipe

FINISH:

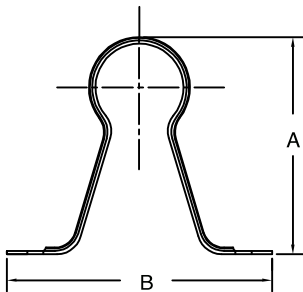
Electro-Galvanized

FUNCTION:

The CPVC Two Hole Stand Off is designed to support pipe running horizontally on side of beam or perpendicular across the bottom of the beam. It can also be used as a guide to mount CPVC Pipe that runs perpendicular across the top of a beam or on a vertical run of pipe. supplied Model #1050 maybe installed onto wood using fastener or into minimum 20 guage steel using two (2) 1/4" x 1 tek type screw. Do not install on the bottom of a beam or under other horizontal surfaces

FEATURES:

- Flared edges protect the CPVC piping
- Retainer dimples secure hanger to pipe during installation
- Attaches easily to wood structure with two #10 x 1" hex head screws
- Strap has one (2) 1/4" diameter hole for mounting
- Optional: 1/4" x 1" tek type screw for mounting to steel (sold seperately)
- Strap is UL listed for US and Canada



CPVC Stand Off Strap: Loads (LBS) • Weights (LBS) • Dimensions (IN)

ITEM CODE	PIPE SIZE	MAX SPACING	WEIGHT	A	B	C	D NOMINAL PIPE SIZE
1050-075EG	3/4	5'-6"	.121	2 ¹¹ / ₁₆	3 ¹ / ₄	1	1.05
1050-100EG	1	6'-0"	.128	2 ¹⁵ / ₁₆	3 ¹ / ₄	1	1.315
1050-125EG	1 ¹ / ₄	6'-6"	.141	3 ⁵ / ₁₆	3 ¹ / ₄	1	1.66
1050-150EG	1 ¹ / ₂	7'-0"	.152	3 ⁹ / ₁₆	3 ⁹ / ₁₆	1	1.90
1050-200EG	2	8'-0"	.164	4 ¹ / ₁₆	4 ¹ / ₁₆	1	2.375