

# CPVC FIXINGS



## CPVC WRAP AROUND

### One Hole Model 1070

#### SIZE:

3/4" thru 2" CPVC pipe

#### FINISH:

Electro-Galvanized

#### FUNCTION:

The CPVC One Hole Wrap Around Pipe Strap is designed to support pipe running horizontally on side of beam or as a guide to mount CPVC Pipe running perpendicular across the top of beam or on a vertical run. Model # 1070 may be installed onto wood using supplied fastener or into minimum 20 guage steel using one (1) 1/4" x 1 tek type screw.

#### FEATURES:

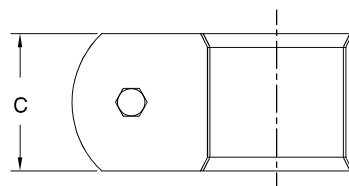
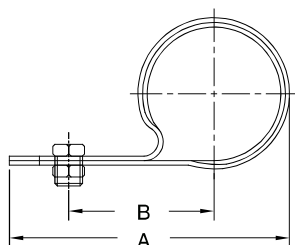
Flared edges protect the CPVC piping

Attaches easily to wood structure with one #10 x 1" hex head screw

Strap has one (1) 1/4" diameter hole for mounting

Optional: 1/4" x 1" tek type screw for mounting to steel (sold seperately)

Strap is UL listed for US and Canada



### CPVC Wrap Around: Loads (LBS) • Weights (LBS) • Dimensions (IN)

ITEM CODE	PIPE SIZE	MAX SPACING	WEIGHT	A	B	C	D NOMINAL PIPE SIZE
1070-075EG	3/4	5'-6"	.087	2 3/8	1 1/4	1 3/16	1.05
1070-100EG	1	6'-0"	.094	2 11/16	1 7/16	1 3/16	1.315
1070-125EG	1 1/4	6'-6"	.11	3 1/16	1 5/8	1 3/16	1.66
1070-150EG	1 1/2	7'-0"	.119	3 5/16	1 3/4	1 3/16	1.90
1070-200EG	2	8'-0"	.141	3 11/16	1 7/8	1 3/16	2.375