

CPVC FIXINGS



CPVC SIDE MOUNT STRAP

Two Hole Model 1090

SIZE:

3/4" thru 2" CPVC pipe

FINISH:

Electro-Galvanized

FUNCTION:

The CPVC Two Hole Side Mount Pipe Strap is designed to support pipe running horizontally on side of beam. When attached to the bottom of the beam it supports the pipe, when attaching to the top of beam it will only be act as a guide. Model #1090 maybe installed onto wood using supplied fastener or into minimum 20 guage steel using two (2) 1/4" x 1 tek type screw

FEATURES:

Flared edges protect the CPVC piping

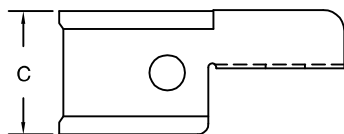
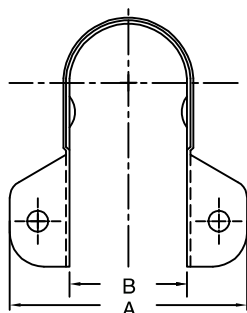
Retainer dimples secure hanger to pipe during installation

Attaches easily to wood structure with two #10 x 1" hex head screws

Strap has one (2) 1/4" diameter hole for mounting

Optional: 1/4" x 1" tek type screw for mounting to steel (sold seperately)

Strap is UL listed for US and Canada



CPVC Side Mount Strap: Loads (LBS) • Weights (LBS) • Dimensions (IN)

| ITEM CODE | PIPE SIZE | MAX SPACING | WEIGHT | A | B | C | D NOMINAL PIPE SIZE |
|------------|-----------|-------------|--------|---------------------------------|---------------------------------|--------------------------------|---------------------------|
| 1090-075EG | 3/4 | 5'-6" | .085 | 2 ⁵ / ₁₆ | 1 ¹¹ / ₁₆ | 1 ³ / ₁₆ | 1.05 |
| 1090-100EG | 1 | 6'-0" | .094 | 2 ⁵ / ₈ | 1 ¹⁵ / ₁₆ | 1 ³ / ₁₆ | 1.315 |
| 1090-125EG | 1 1/4 | 6'-6" | .104 | 2 ¹⁵ / ₁₆ | 2 ⁵ / ₁₆ | 1 ³ / ₁₆ | 1.66 |
| 1090-150EG | 1 1/2 | 7'-0" | .113 | 3 ³ / ₁₆ | 2 ¹ / ₂ | 1 ³ / ₁₆ | 1.90 |
| 1090-200EG | 2 | 8'-0" | .132 | 3 ⁵ / ₈ | 3 | 1 ³ / ₁₆ | 2.375 |