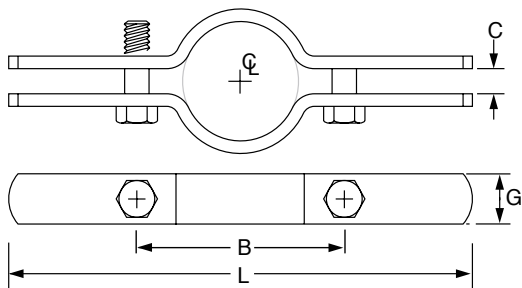


# PIPE HANGERS



1 1/2" thru 8"



## RISER CLAMP

### Standard Riser Clamp Model 6200 & 6300

**SIZE:**

Range: 1/2" thru 24"

**FINISH:**

Electro-Galvanized & Plain

**MATERIAL:**

Carbon steel

**FEATURES:**

- Maximum temperature Plain 650° F, Galvanized 450° F
- Designed for standard iron pipe
- Complies with Federal Specifications A-A-1192A (Type 8), WW-H-171-E (Type 8) and ANSI/MSS SP-69 and MSS SP-58 (Type 8)

**Riser Clamp - Plain & Galv.:**

**Loads (LBS) • Weights (LBS) • Dimensions (IN) • Torque Values (FT-LBS)**

ITEM CODE 6300	ITEM CODE 6200	TUBE SIZE	MAX LOAD	WEIGHT	L	G WIDTH	B	C	BOLT SIZE	TORQUE VALUES
6300-0050P	6200-0050EG	1/2"	220	0.80	9	1	2 1/8	3/8	3/8	19
6300-0075P	6200-0075EG	3/4"	220	0.80	9	1	2 7/8	3/8	3/8	19
6300-0100P	6200-0100EG	1"	220	1.04	9	1	3 3/8	3/8	3/8	19
6300-0125P	6200-0125EG	1 1/4"	250	1.06	9 1/4	1	3 1/2	3/8	3/8	19
6300-0150P	6200-0150EG	1 1/2"	250	1.08	10	1 3/16	3 7/8	3/8	3/8	19
6300-0200P	6200-0200EG	2"	300	1.16	10 1/4	3/16	4 1/4	1/2	7/8	19
6300-0250P	6200-0250EG	2 1/2"	400	1.32	11	1 3/16	4 3/4	1/2	3/8	19
6300-0300P	6200-0300EG	3"	500	1.56	11 3/4	1 3/16	5 1/2	1/2	3/8	19
6300-0350P	6200-0350EG	3 1/2"	600	1.70	12 1/2	1 3/16	6 1/2	1/2	3/8	19
6300-0400P	6200-0400EG	4"	750	1.70	13	1	7	1/2	1/2	50
6300-0500P	6200-0500EG	5"	1500	3.45	14	1 7/16	8	1/2	1/2	50
6300-0600P	6200-0600EG	6"	1600	3.70	15 1/4	1 1/2	9	1/2	1/2	50
6300-0800P	6200-0800EG	8"	2500	7.40	18 1/4	1 1/2	12	5/8	5/8	50
6300-1000P	6200-1000EG	10"	2500	11.00	20	2	13 3/4	5/8	5/8	65
6300-1200P	6200-1200EG	12"	2700	16.25	22 1/4	2	15 3/4	5/8	5/8	65
6300-1400P	6200-1400EG	14"	2700	17.00	25	2	17 1/4	5/8	5/8	65
6300-1600P	6200-1600EG	16"	3200	18.50	26 1/2	2 1/2	19 3/4	3/4	3/4	150
6300-1800P	6200-1800EG	18"	3200	28.00	28	2 1/2	21 3/4	3/4	3/4	150
6300-2000P	6200-2000EG	20"	3200	43.40	30	2 1/2	23 3/4	3/4	3/4	150
6300-2400P	6200-2400EG	24"	3200	82.00	36 3/4	3	30	1	7/8	190