



## STUD

### Model ATRSTUD

**SIZE:**

3/8", 1/2" & 5/8"

**FINISH:**

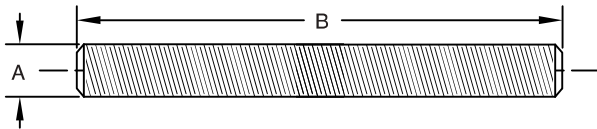
Electro-zinc plated

**FUNCTION:**

Attaches hangers to structural attachments without threading or cutting the rod

**FEATURES:**

- All STUDS manufactured by Elite Components meets the minimum physical requirements of ASTM A36 and A307. 3/8", 1/2" and 5/8" are produced from 1006/1008/1010 steel.
- All Zinc STUD is plated according to ASTM B633, and meets the specification of FeZn 8 SC2 – Type III



### Stud: Weights (LBS) • Dimensions (IN)

ITEM CODE	THREAD SIZE (A)	LENGTH (B)	WEIGHT
ATRSTUD037020Z	3/8- 16	2	0.049
ATRSTUD037030Z	3/8- 16	3	0.073
ATRSTUD037035Z	3/8- 16	3½	0.085
ATRSTUD037040Z	3/8- 16	4	0.097
ATRSTUD037045Z	3/8- 16	4½	0.109
ATRSTUD037050Z	3/8- 16	5	0.122
ATRSTUD037055Z	3/8- 16	5½	0.134
ATRSTUD037060Z	3/8- 16	6	0.146
ATRSTUD037065Z	3/8- 16	6½	0.158
ATRSTUD037070Z	3/8- 16	7	0.170
ATRSTUD037075Z	3/8- 16	7½	0.182
ATRSTUD037080Z	3/8- 16	8	0.194
ATRSTUD037085Z	3/8- 16	8½	0.207
ATRSTUD037090Z	3/8- 16	9	0.219
ATRSTUD037095Z	3/8- 16	9½	0.231
ATRSTUD037100Z	3/8- 16	10	0.243
ATRSTUD037105Z	3/8- 16	10½	0.255
ATRSTUD037110Z	3/8- 16	11	0.267

ITEM CODE	THREAD SIZE (A)	LENGTH (B)	WEIGHT
ATRSTUD037115Z	3/8- 16	11½	0.279
ATRSTUD037120Z	3/8- 16	12	0.291
ATRSTUD037130Z	3/8- 16	13	0.316
ATRSTUD037140Z	3/8- 16	14	0.340
ATRSTUD037150Z	3/8- 16	15	0.365
ATRSTUD037160Z	3/8- 16	16	0.389
ATRSTUD037170Z	3/8- 16	17	0.413
ATRSTUD037180Z	3/8- 16	18	0.437
ATRSTUD037190Z	3/8- 16	19	0.462
ATRSTUD037210Z	3/8- 16	21	0.510
ATRSTUD037230Z	3/8- 16	23	0.559
ATRSTUD037260Z	3/8- 16	26	0.632
ATRSTUD037280Z	3/8- 16	28	0.680
ATRSTUD037300Z	3/8- 16	30	0.729
ATRSTUD037320Z	3/8- 16	32	0.778
ATRSTUD037340Z	3/8- 16	34	0.826
ATRSTUD037360Z	3/8- 16	36	0.873
ATRSTUD037480Z	3/8- 16	48	1.166