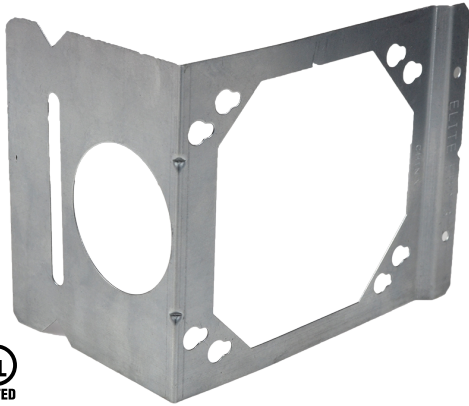


## BOX MOUNTING BRACKET FOR ELECTRICAL BOX



### FEATURES:

Movement of the box in the wall is decreased due to the support legs. It can be used with 4" or 4 11/16" boxes and attaches to both metal and wood stud.

### FINISH:

Galvanized

### MATERIAL:

Galvanized Steel

STANDARD DUTY	HEAVY DUTY	ELECTRICAL BOX SIZE	STUD DEPTH (INCH)	BOX QTY.
EH23	EC23	4 in sq. & 4-11/16 in	2 1/2" & 3 1/2"	100
EH4	EC4	4 in sq. & 4-11/16 in	4	100
EH6	EC6	4 in sq. & 4-11/16 in	6	100