

STRUT FITTINGS

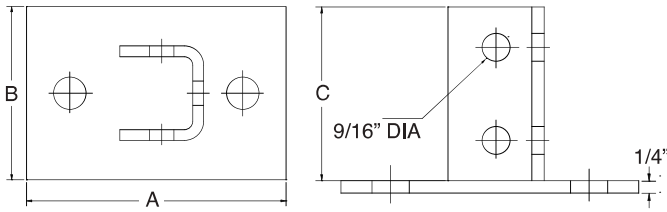


POST BASE

**Eight Hole
Model P9**

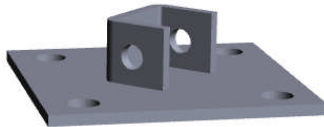
FINISH:

Electro-Galvanized



Post Base: Weights (LBS) • Dimensions (IN)

ITEM CODE	A	B	C	WEIGHT
P09-6350350EG	6	3½	3½	3.15

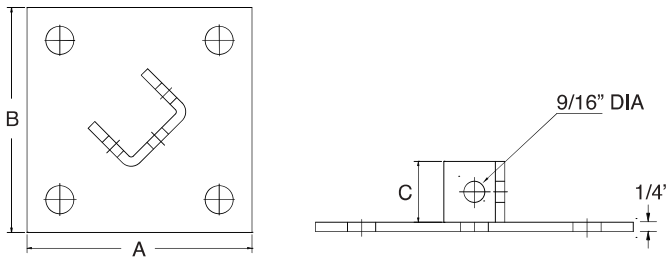


POST BASE

**Seven Hole
Model P10**

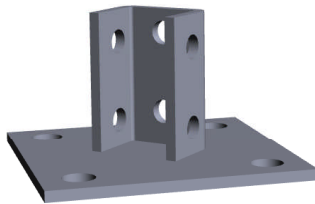
FINISH:

Electro-Galvanized



Post Base: Weights (LBS) • Dimensions (IN)

ITEM CODE	A	B	C	WEIGHT
P10-66162EG	6	6	1⅝	3.15

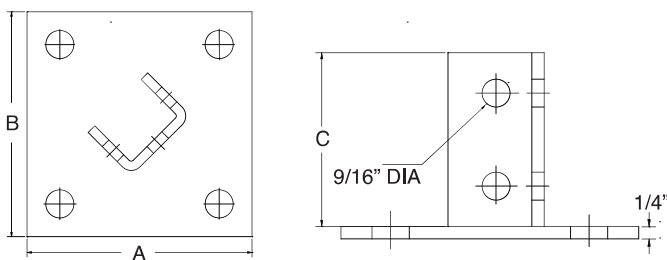


Post Base

**Ten Hole
Model P11**

FINISH:

Electro-Galvanized



Post Base: Weights (LBS) • Dimensions (IN)

ITEM CODE	A	B	C	WEIGHT
P11-66350EG	6	6	3½	3.80