

# THREADED ROD



## ALL THREAD ROD

### Model ATR

**SIZE:**

1/4" thru 1 1/2"

**FINISH:**

Plain, Electro-zinc plated, Stainless Steel, & Hot Dip Galvanized

**FUNCTION:**

Attaches hangers to structural attachments without threading the rod

**NOTES:**

1. ROD ENDS TO BE DEBURRED
2. UNC-2A THREAD
3. MATERIAL REQUIREMENTS:  
 LOW CARBON STEEL MATERIAL PER ES-136:  
 -TENSILE STRENGTH-58,000 PSI MIN.  
 -YIELD STRENGTH-36,000 PSI MIN.
4. ENSURE PRODUCT MEETS LOAD REQUIREMENTS PER ES1182.

**FEATURES:**

- All Thread Rod manufactured by Elite Components meets the minimum physical requirements of (ASTM A36 & A307)
- 1/4" to 1" ATR is produced from 1006/1008/1010 steel.
- All Zinc Threaded Rod is plated according to (ASTM B633), and meets the specification of FeZn 8 SC2 – Type III
- All Stainless Steel Rod (Type 304) is manufactured in accordance to (ASTM A193)
- All Hot Dip Galvanized Rod is manufactured in accordance to (ASTM A153)

**All Thread Rod: Weights (LBS) • Dimensions (IN) • Length (FT)**

ITEM CODE PLAIN	ITEM CODE EG	ITEM CODE STAINLESS	ITEM CODE HD*	THREAD SIZE	WEIGHT / FT.	LENGTH	TUBE QTY PCS/FT.
ATR02506B	ATR02506Z			1/4- 20	0.12	6	50/300
ATR02510B	ATR02510Z			1/4- 20	0.12	10	50/500
ATR02512B	ATR02512Z			1/4- 20	0.12	12	50/600
		ATR03703SS		3/8- 16	0.291	3	20/60
		ATR03706SS		3/8- 16	0.291	6	20/120
ATR03706B	ATR03706Z			3/8- 16	0.291	6	25/150
ATR03710B	ATR03710Z			3/8- 16	0.291	10	25/250
		ATR03712SS		3/8- 16	0.291	12	20/240
ATR03712B	ATR03712Z			3/8- 16	0.291	12	25/300
		ATR05003SS		1/2- 13	0.522	3	12/36
ATR05006B	ATR05006Z	ATR05006SS		1/2- 13	0.522	6	12/72
ATR05010B	ATR05010Z			1/2- 13	0.522	10	12/120
ATR05012B	ATR05012Z	ATR05012SS	ATR00512HD	1/2- 13	0.522	12	12/144
ATR06206B	ATR06206Z	ATR06206SS		5/8- 11	0.837	6	8/48
ATR06210B	ATR06210Z			5/8- 11	0.837	10	8/80
ATR06212B	ATR06212Z	ATR06212SS	ATR00612HD	5/8- 11	0.837	12	8/96
ATR07506B	ATR07506Z	ATR07506SS		3/4- 10	1.224	6	5/30
ATR07510B	ATR07510Z			3/4- 10	1.224	10	5/50
ATR07512B	ATR07512Z	ATR07512SS		3/4- 10	1.224	12	5/60
ATR08706B	ATR08706Z			7/8- 9	1.692	6	4/24
ATR08710B	ATR08710Z			7/8- 9	1.692	10	4/40
ATR08712B	ATR08712Z			7/8- 9	1.692	12	4/48
ATR10006B	ATR10006Z			1 - 8	2.204	6	3/18
ATR10010B	ATR10010Z			1 - 8	2.204	10	2/20
ATR10012B	ATR10012Z			1 - 8	2.204	12	2/24
ATR11206B	ATR11206Z			1 1/8- 7	2.805	6	2/12
ATR11212B	ATR11212Z		ATR11212HD	1 1/8- 7	2.805	12	2/24
ATR12506B	ATR12506Z			1 1/4- 7	3.5	6	1/6
ATR12512B	ATR12512Z		ATR12512HD	1 1/4- 7	3.5	12	1/12
ATR15006B	ATR15006Z			1 1/2- 6	5.05	6	1/6
ATR15012B	ATR15012Z		ATR15012HD	1 1/2- 6	5.05	12	1/12

\* HDG Rod must use an oversized nut!



## STUD

### Model ATRSTUD

**SIZE:**

3/8", 1/2" & 5/8"

**FINISH:**

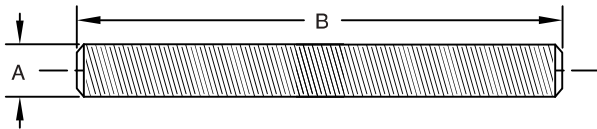
Electro-zinc plated

**FUNCTION:**

Attaches hangers to structural attachments without threading or cutting the rod

**FEATURES:**

- All STUDS manufactured by Elite Components meets the minimum physical requirements of ASTM A36 and A307. 3/8", 1/2" and 5/8" are produced from 1006/1008/1010 steel.
- All Zinc STUD is plated according to ASTM B633, and meets the specification of FeZn 8 SC2 – Type III



### Stud: Weights (LBS) • Dimensions (IN)

ITEM CODE	THREAD SIZE (A)	LENGTH (B)	WEIGHT
ATRSTUD037020Z	3/8- 16	2	0.049
ATRSTUD037030Z	3/8- 16	3	0.073
ATRSTUD037035Z	3/8- 16	3½	0.085
ATRSTUD037040Z	3/8- 16	4	0.097
ATRSTUD037045Z	3/8- 16	4½	0.109
ATRSTUD037050Z	3/8- 16	5	0.122
ATRSTUD037055Z	3/8- 16	5½	0.134
ATRSTUD037060Z	3/8- 16	6	0.146
ATRSTUD037065Z	3/8- 16	6½	0.158
ATRSTUD037070Z	3/8- 16	7	0.170
ATRSTUD037075Z	3/8- 16	7½	0.182
ATRSTUD037080Z	3/8- 16	8	0.194
ATRSTUD037085Z	3/8- 16	8½	0.207
ATRSTUD037090Z	3/8- 16	9	0.219
ATRSTUD037095Z	3/8- 16	9½	0.231
ATRSTUD037100Z	3/8- 16	10	0.243
ATRSTUD037105Z	3/8- 16	10½	0.255
ATRSTUD037110Z	3/8- 16	11	0.267

ITEM CODE	THREAD SIZE (A)	LENGTH (B)	WEIGHT
ATRSTUD037115Z	3/8- 16	11½	0.279
ATRSTUD037120Z	3/8- 16	12	0.291
ATRSTUD037130Z	3/8- 16	13	0.316
ATRSTUD037140Z	3/8- 16	14	0.340
ATRSTUD037150Z	3/8- 16	15	0.365
ATRSTUD037160Z	3/8- 16	16	0.389
ATRSTUD037170Z	3/8- 16	17	0.413
ATRSTUD037180Z	3/8- 16	18	0.437
ATRSTUD037190Z	3/8- 16	19	0.462
ATRSTUD037210Z	3/8- 16	21	0.510
ATRSTUD037230Z	3/8- 16	23	0.559
ATRSTUD037260Z	3/8- 16	26	0.632
ATRSTUD037280Z	3/8- 16	28	0.680
ATRSTUD037300Z	3/8- 16	30	0.729
ATRSTUD037320Z	3/8- 16	32	0.778
ATRSTUD037340Z	3/8- 16	34	0.826
ATRSTUD037360Z	3/8- 16	36	0.873
ATRSTUD037480Z	3/8- 16	48	1.166